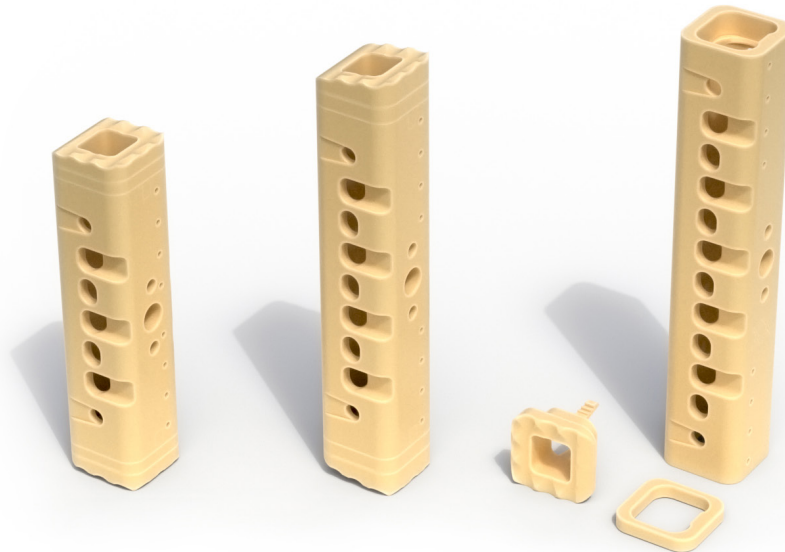


Boxcar

VERTEBRAL BODY REPLACEMENT

Back on Track



PRODUCT FEATURES:

- First PEEK-OPTIMA HA Enhanced VBR System
- Two footprints (12x12.5mm & 14x14.5mm)
- Height range of 13mm to 75mm
- Parallel or lordotic up to a combined 15°
- Spacers and end caps provide intra-operative flexibility

Osteoconductive:

Hydroxyapatite (HA), a well-known osteoconductive material, is fully integrated (not coated) with PEEK-OPTIMA, making it available on all surfaces of the device for earlier bone ongrowth and greater new bone formation.^{1,2}

Modulus:

With a modulus closer to bone³, PEEK-OPTIMA HA Enhanced reduces stress shielding at a higher rate than titanium.⁴

Radiolucent:

PEEK-OPTIMA HA Enhanced is radiolucent for easy monitoring of the healing site with X-rays, CT or MRI.

Reference:

- Study evaluated the bone ongrowth of PEEK-OPTIMA and PEEK-OPTIMA HA Enhanced in a bone defect model in sheep. Data on file at Invivo. This has not been correlated with human clinical experience
- J. Henkel, M. A. Woodruff, D. R. Epari, R. Steck, V. Glatt, I. C. Dickinson, P. F. M. Choong, M. A. Schuetz, D. W. Hutmacher. Bone Regeneration Based on Tissue Engineering Conceptions — A 21st Century Perspective. Bone Research (2013) 1, 216–248.
- Comparison of the Strength and Stiffness of Polymers with Titanium based on typical values.

ORDERING INFORMATION:

CATALOG NUMBER	PRODUCT DESCRIPTION
06-0V-12xx	Boxcar VBR, 12.0 x 12.5 x 13-68mm Tall
06-1V-12xx	Boxcar VBR, 12.0 x 12.5 x 0°-7.5° End Cap
06-2V-12xx	Boxcar VBR, 12.0 x 12.5 x 1.0-2.5mm Spacer
06-0V-14xx	Boxcar VBR, 14.0 x 14.5 x 13-68mm Tall
06-1V-14xx	Boxcar VBR, 14.0 x 14.5 x 0°-7.5° End Cap
06-2V-14xx	Boxcar VBR, 14.0 x 14.5 x 1.0-2.5mm Spacer